

FUZION[®]

FUZIONXC PLATFORM

CAPACITY REDEFINED

The FuzionXC™ is the ultimate single-machine solution for high-mix, low/medium-volume SMT requirements, with more than twice the feeder inputs of traditional surface mount platforms. FuzionXC streamlines or eliminates changeovers altogether by accommodating multiple product setups, fixed family schemes, duplicate or alternate feeder flexibility, or “Feeder Anywhere” flexible feeder setup.

This contemporary production model can boost utilization and improve overall output or even eliminate entire production shifts. Features include:

- Dual-beam platforms with throughput up to 65,500 cph; 20,000–25,000 cph real throughput
- Up to 272 8mm inputs, 29 network access tray inputs, strip tape and track feeder support
- Industry-leading cost per placement, flexibility and accuracy
- Closed-loop processes to ensure the highest yields
- Tool set to accelerate NPI and achieve 100% first-pass yield



VIDEO



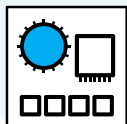
BENEFITS & VALUE



OPTIMAL UTILIZATION
2X feeder capacity reduces changeovers for up to **50%** utilization improvement or **20%** more boards in the same time



CAPACITY REDEFINED
Replace multiple platforms with a single Fuzion with more feeders (up to **272**); Most feeder inputs per floor space, lowest cost per input



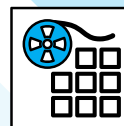
MAXIMUM EFFICIENCY
Wide overlapping component range between placement heads; Change the program, not the line



FAST NPI PROCESS
Sequential process for complete board build; Full editing capability in pre-production NPI mode and dynamic on-the-fly editing in full production mode



LOWEST COST OF OWNERSHIP
Fewer modules means less operators, training, maintenance, power/air consumption, programming and labor



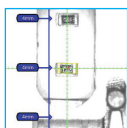
SUPPORT FOR A VARIETY OF INPUT TYPES
Portfolio of reliable feeding solutions accommodate a range of components and packaging: tape, tray, tube, track, and bowl

FUZION SOFTWARE

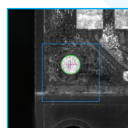


- Sequential process for complete board build
- Quickly generate and optimize fiducial, feeder, placement, and component information

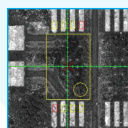
- Full editing capability in pre-production NPI mode, and dynamic editing in full production mode eliminate machine stoppages
- Semi-automated solder paste and post-placement inspection



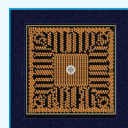
Feeder Inspection



Fiducial Inspection



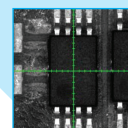
Pre-Place Inspection



Component Teach

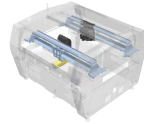


Component Inspection



Post-Place Inspection

FUZIONXC PORTFOLIO



FuzionXC2-37

High-capacity NPI, all-in-one, line balancer, or multifunction solution with a full component range.



FuzionXC2-60

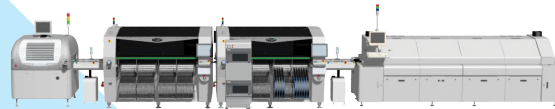
Cost-efficient, high-performance turret replacement or high-input chip placer.



DTF FuzionXC2-37

NPI / All-in-One – *Single-machine solution from prototyping to LVHM*

Scalable from NPI to volume production. Superb fit for smaller low-volume OEM/EMS and higher-complexity markets.



FuzionXC2-60 DTF FuzionXC2-37

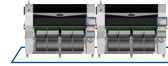


Medium-Volume, Medium-Mix – *Highest flexibility (front/back setups)*

Excellent for medium-volume OEM, White Goods, Military, and Medical markets.



2x FuzionXC Platform line
536 feeder inputs



Lowest CapEx

12x mini module line
500 feeder inputs



2.1x CapEx

5x traditional platform line
500 feeder inputs



1.6x CapEx

FuzionXC Specifications

Platform Model	FuzionXC2-37	FuzionXC2-60
Positioning System	Dual-beam linear motor	Dual-beam linear motor
Placement Heads	30-spindle FZ30™ & 7-spindle FZ7™	(2) 30-spindle FZ30™
Cameras	On-the-head camera & Upward-looking camera	(2) On-the-head cameras
Throughput	43,000 cph (Max); 20,500 cph (1-Bd IPC Chips)	63,500 cph (Max); 30,000 cph (1-Bd IPC Chips)
Accuracy (@>1.00 Cpk)	FZ30: ±34µm (Chips); ±34µm (ICs) FZ7: ±30µm (Chips); ±20µm (ICs)	±34µm (Chips); ±34µm (ICs)
Max PCB Dimensions	610mm x 1300mm	610mm x 1300mm
Max Feeder Inputs	272 (1 ULC)	264
Component Range (mm)	(008004) .25 x .125 (Min); 150 square and up to 25 tall (Max)	(008004) .25 x .125 (Min); 30 x 30 x 6 (Max)

