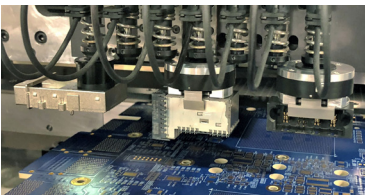
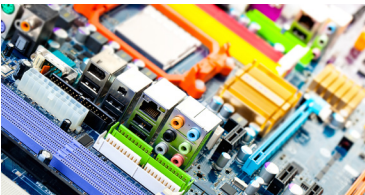
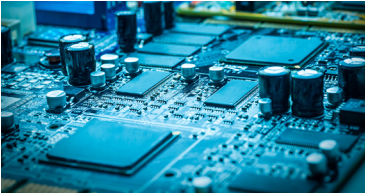


Advanced automation for a connected world



www.uic.com | email: universal@uic.com

MC-6713

©2018 Universal Instruments Corporation.

All rights reserved. All specifications are subject to change.

AMERICAS

Tel. 1-800-432-2607

Tel. +1-607-779-7522

EUROPE

Tel. +421-2-4930-96-60

CHINA, SHENZHEN

Tel. +86-755-2685-9108

CHINA, SHANGHAI

Tel. +86-21-6495-2100

PENANG, MALAYSIA

Tel. +60-4-644-7067

Complex Large PCB Server SMT – *backplane, motherboard, blade, router*

Maximum flexibility, utilization and yields for high complexity

- **Large PCB:** 610x1300mm, 12mm thick, 15kg boards standard
- **High part count (1000+) in single pass:** Up to 272 feeder inputs per module
- **Flexibility, wide component range:** 08004–150mm square and 25mm tall
- **Efficiency:** High-mix solutions for streamlined changeovers, common setups

Odd-Form Pin-Through-Hole Assembly – *blade, router, motherboard*

Odd-form assembly made standard

- **Affordable automation:** Reduced labor costs, <2-year ROI
- **Broadest variety of pin-through-hole and press-fit at highest speeds:** Any odd-form up to 150mm square (Ecaps, connectors, heatsinks, shields, high-speed radial)
- **Tall part automation:** 50 over 50mm place, 60mm tall, flexible programming
- **Best-in-class price performance:** Highest real throughput for complex assemblies, lowest cost per placement

Server High-Density Press-fit Connector Automation – *backplane interconnect*

Superior output and yield

- **Eliminate human errors:** 100% pre-insert pin integrity & tolerance inspection
- **Speed and adaptability for complex connectors:** Up to 14 unique grippers/ nozzles, 22kg force; industry-fastest press-fit placer
- **Flexible odd-form feeding solutions:** High-speed tape, tube, tray, custom
- **Automation excellence:** Highest throughput and quality

SERVER VIDEO ([click here](#))

