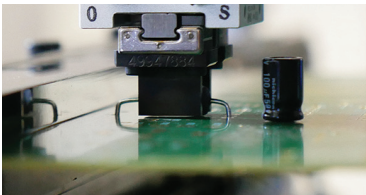
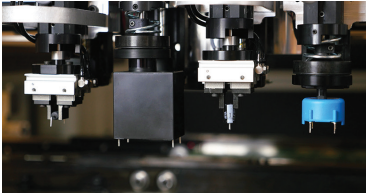


Uflex™

*Ultimate flexibility. Simplified automation.*



*The ultimate flexible assembly cell for all forms of odd-form insertion and mechanical assembly operations*

UFLEX VIDEO ([click here](#))



[www.uic.com](http://www.uic.com) | email: [universal@uic.com](mailto:universal@uic.com)

MC-6702

©2019 Universal Instruments Corporation.

All rights reserved. All specifications are subject to change.

AMERICAS

Tel. 1-800-432-2607

Tel. +1-607-779-7522

EUROPE

Tel. +421-2-4930-96-60

CHINA, SHENZHEN

Tel. +86-755-2685-9108

CHINA, SHANGHAI

Tel. +86-21-6495-2100

PENANG, MALAYSIA

Tel. +60-4-644-7067

#### Automate assembly without dedicated hard-tooled systems

- Small footprint – only 1.0m deep x 1.7m wide
- Easily reconfigured for a wide range of applications
- Dispensing, screw driving, labeling, test handling...
- Large substrate handling up to 630mm x 500mm
- Supports up to 4 high-speed vacuum spindles or 3 high-speed pneumatic grippers
- Parts up to 60mm tall, 50mm diameter, .45kg in weight
- Radial and axial insertion
- 100% vision of all leads and features before inserting
- Highest yield and quality